

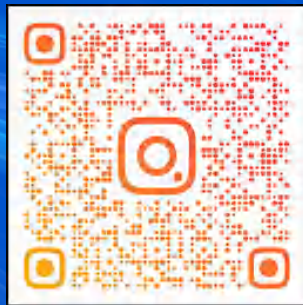


15 Years Of Experiences In Smart House Market



**Volferda  
Product**

**Catalog**



**Instagram**

**<https://www.volferda.com>**  
**<https://volferda.en.alibaba.com>**

**Guangdong Zhongke Suda Intelligent Equipment Co., Ltd**  
**(Volferda Industry)**

## COMPANY PROFILE



"Guangdong Zhongke Suda Intelligent Equipment Co., Ltd (Volferda Industry). It is a high-tech enterprise specialising in the research, development, production and sales of nettle ships, special houses and container houses.

Over the past ten years, we have provided OEM services for many international brands in the field of residential construction. Today, Zhongke Suda has the most complete light steel house product series and container product series, including light steel villa, light steel air bnb, light steel commercial building, light steel petrol station, space capsule, apple capsule, house-boat, container house, container office, container restaurant and so on. Our factory covers an area of 30,000 square metres. The products are exported to all over the world.

All the products of Zhongke Suda have got ISO certificate. Each product is quality verified before delivery. Detailed inspection is carried out before delivery. Make sure the structure and appearance are intact. We will make sure that the products are not damaged during transport. We have established many well-known cases in Australia, the United States, the Philippines, Israel, Nigeria and Japan. With an annual output of 50 million, we are technically mature and price competitive.

## BRAND INTRODUCTION



### Lasting quality

Professional products. Quality is guaranteed. Serve with care

### ◆ Independent research and development team

Volferda Smart House Co.,Ltd. is committed to scientific and technological innovation, has a top design team and manufacturing plant, the use of industry advanced energy saving, building structure technology, invested in the research and development of "Apple cabin" products, to create a variety of conditions to meet the living conditions of comfortable hotel products, for people to bring more travel and lifestyle possibilities.

### ◆ High efficiency, high quality and cost-effective

No foundation, applicable to all terrain, no damage to the ecological environment, no building waste, ecological environmental protection. In the factory, 40 days of production, assembly and disassembly, integrated transportation, 2 hours of on-site installation, no need for secondary decoration, shorten the construction cycle, equipped with fully intelligent home appliance control system, panoramic vision, own flow.

### ◆ Product quality and service are guaranteed

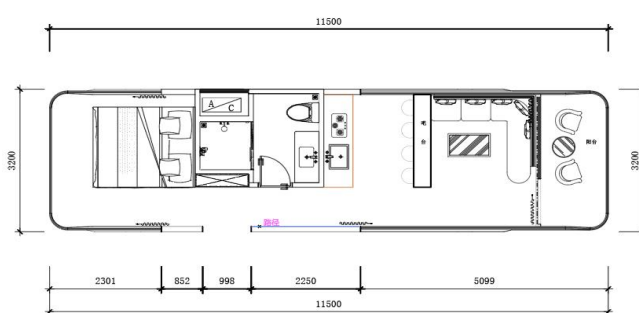
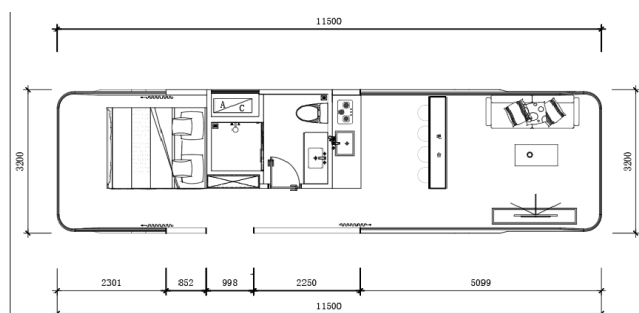
The main structure of the product is special steel structure. The design stability of the structure is strong, and the wind resistance is strengthened. The main material is made of high strength composite material and galvanized sheet, which has high safety and strong protection. By professional soft decoration designers to create space design scheme for customers, professional planning team according to the actual situation of the project and customer requirements, planning and design, including consulting, overall planning, space design, supporting facilities. Construction drawing, etc.



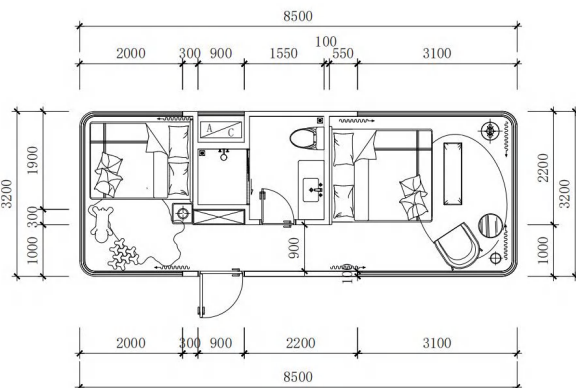
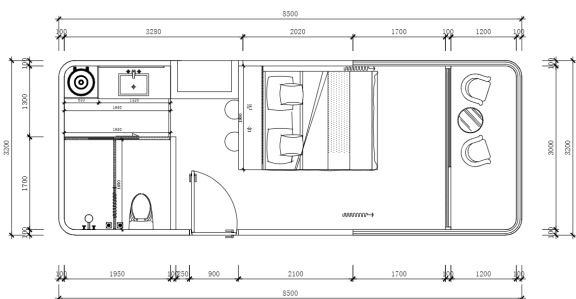
# VL-E7



◆ **Size:** 11500\*3200\*3200mm **Area of structure:** 36.8 m<sup>2</sup>  
**The number of people:** 4-6



# VL-E5



◆ **Size:** 8500\*3200\*3200mm **Area of structure:** 27.2 m<sup>2</sup> **The number of people:** 3-4  
**Room type:** 2bedroom/1bedroom+1balcony

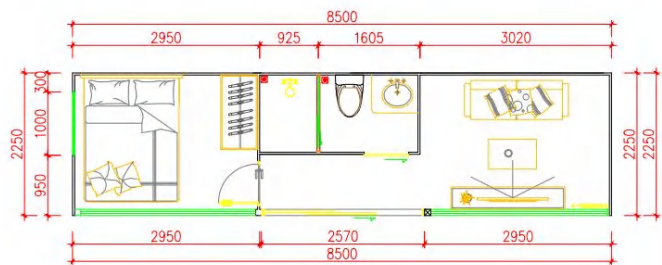
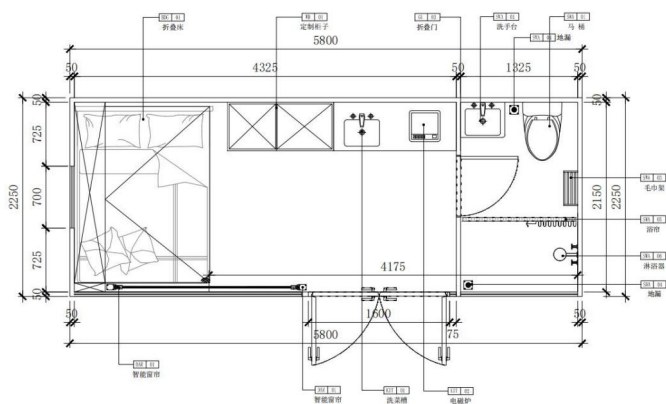




# VL - PB01

Glass steel apple cabin

Available in three different sizes. Can be selected according to their own needs.



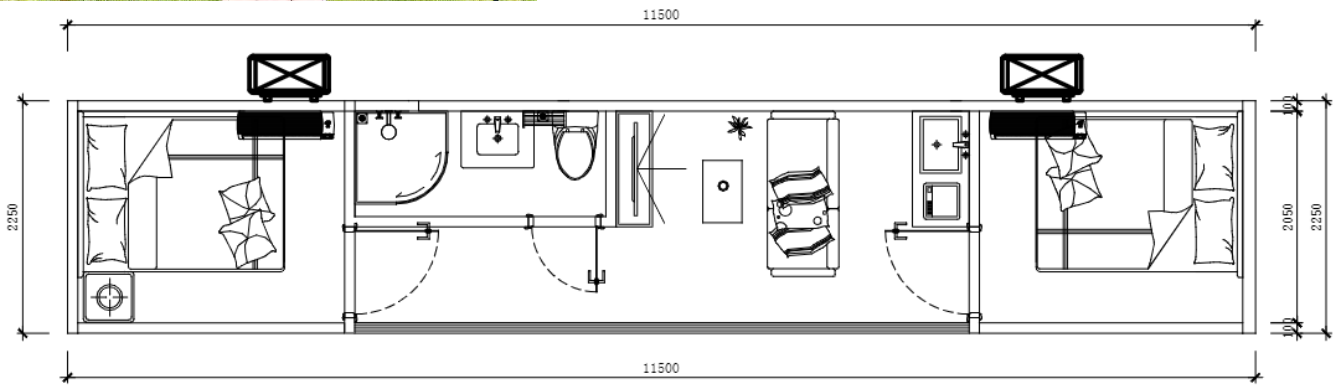
Size: 5800\*2250\*2450mm  
Area of structure: 13m<sup>2</sup> The number of people: 1-2

Size: 8500\*2250\*2450mm  
Area of structure: 19m<sup>2</sup> The number of people: 2-4



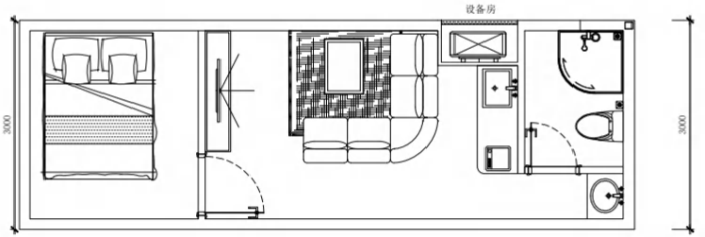
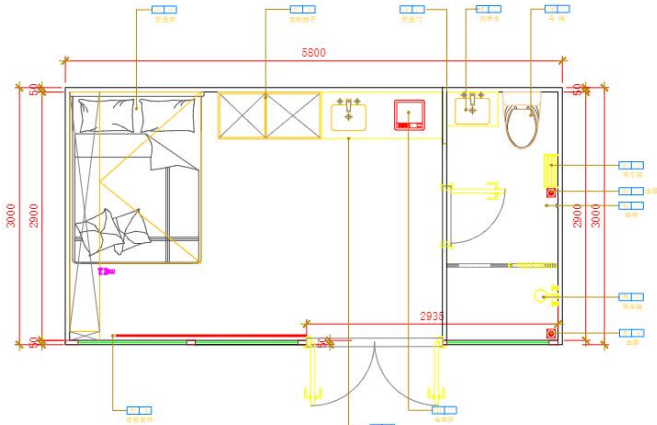
# VL-PB01

Size: 11500\*2250\*2450mm  
Area of structure: 25.8m<sup>2</sup> The number of people: 4-6



# VL - PB02

Glass steel apple cabin

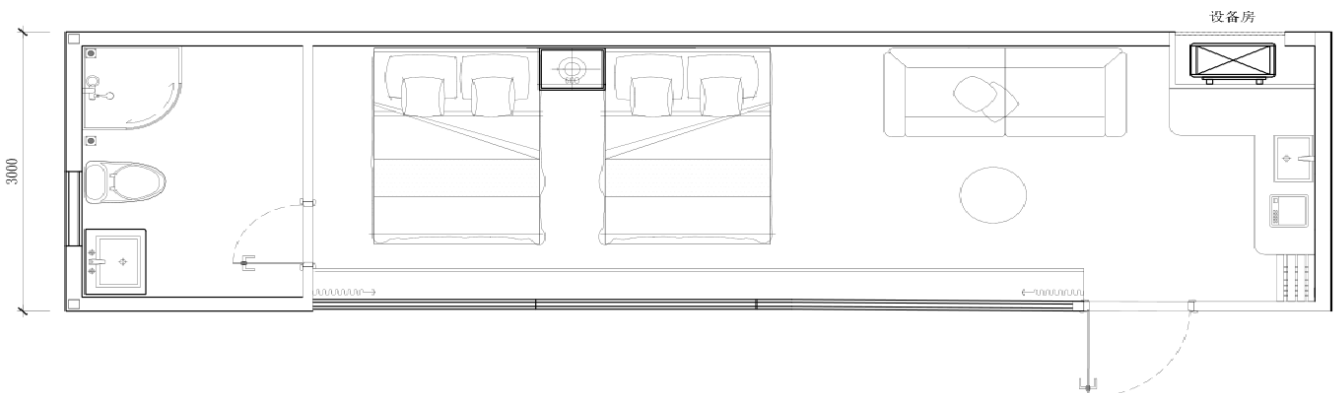


◆ **Size:** 5800\*3000\*3200mm  
**Area of structure:** 13m<sup>2</sup> **The number of people:** 1-2

◆ **Size:** 8500\*3000\*3200mm  
**Area of structure:** 19m<sup>2</sup> **The number of people:** 2-4

## OPTIONAL SIZE

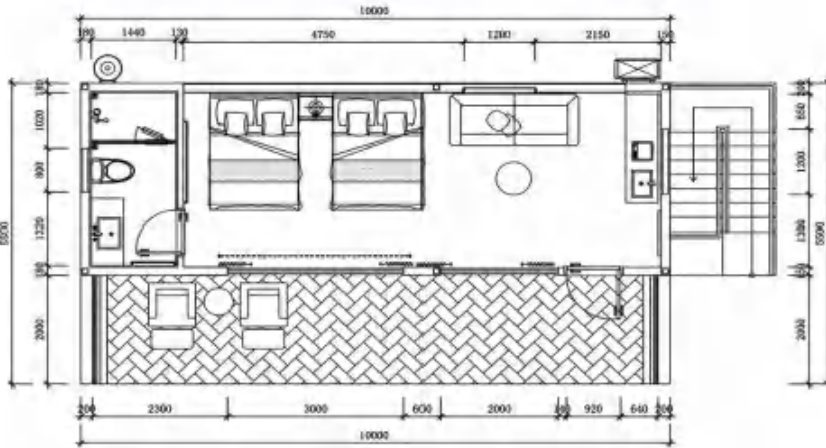
◆ **Size:** 11500\*3000\*3200mm  
**Area of structure:** 26.5m<sup>2</sup>  
**The number of people:** 4-6





# VL - PB03

Glass steel apple cabin



## OPTIONAL SIZE

◆ Size: 10000\*3500\*3200mm

Area of structure: 35m<sup>2</sup>

The number of people: 4-8

# VL-PB05

Glass steel apple cabin

Size: 11500\*3000\*3000mm ◆

Area of structure: 34.5m<sup>2</sup>

The number of people: 4-6







**VL  
-  
PB06**  
Glass steel apple cabin

◆ **Cabin Size:** 5800\*4500\*2450mm **Fence Size:** 5800\*2250\*2450mm  
**Building area:** 26m<sup>2</sup> **The number of people:** 4-6

## OPTIONAL SIZE

### VL-PB08

Glass steel apple cabin



◆ **Size:** 12000\*4000\*3000mm **Area of structure:** 48m<sup>2</sup> **The number of people:** 6-8



VL

-

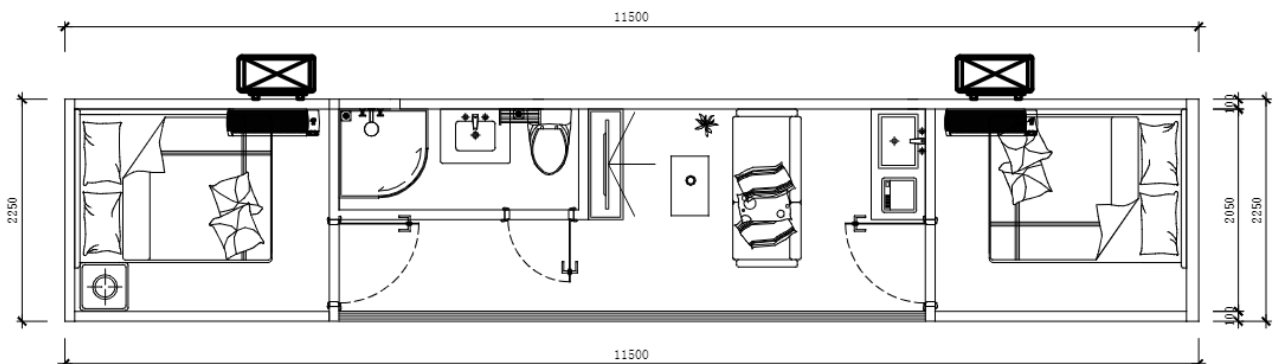
PB09

Glass steel apple cabin

## OPTIONAL SIZE

◆ Size: 5800*2250*2450mm	Area of structure: 13m <sup>2</sup>
8500*2250*2450mm	19m <sup>2</sup>
11500*2250*2450mm	25.8m <sup>2</sup>

The number of people: 4-6

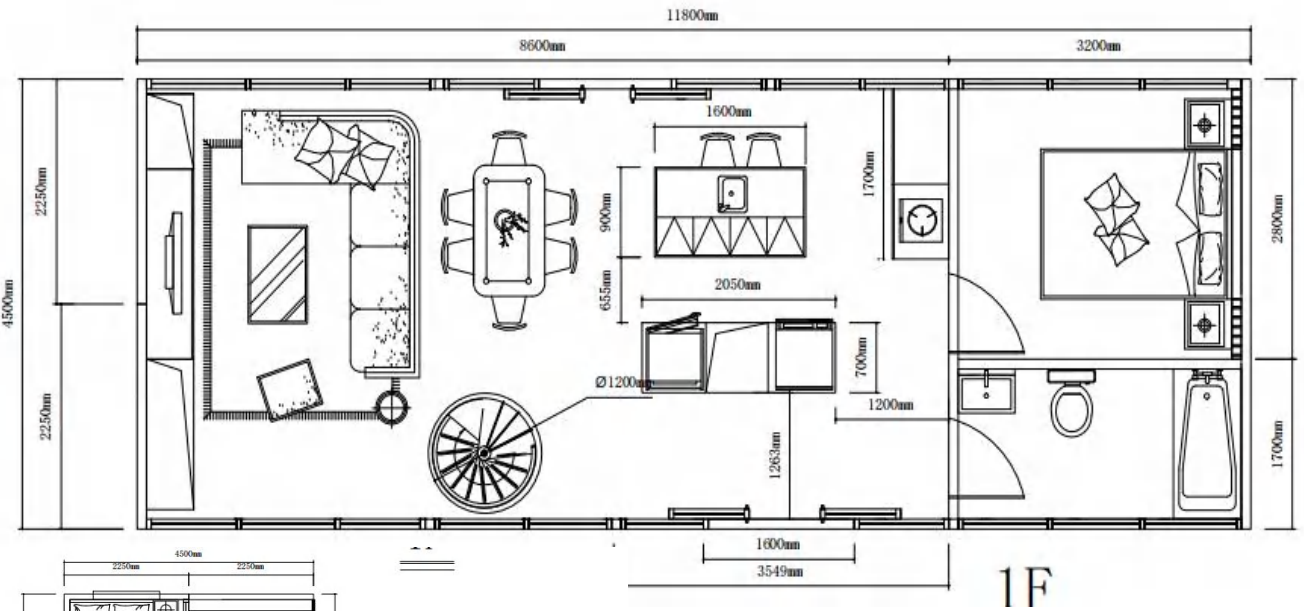






# VL-DB01

## OPTIONAL SIZE



### Ground floor

size: 11500\*4500\*2450mm

Area of structure: 51.8m<sup>2</sup>

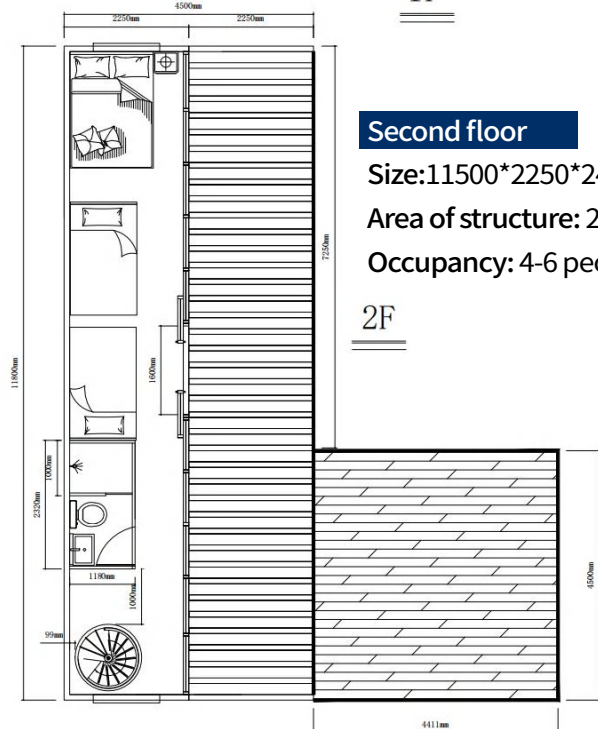
Occupancy: 4-6 people

### Second floor

Size: 11500\*2250\*2450mm pavilion

Area of structure: 25.9m<sup>2</sup>

Occupancy: 4-6 people



# VL-DB02



## OPTIONAL SIZE

**Ground floor**

size: 5800\*2250\*2450mm

Area of structure: 13m<sup>2</sup>

Occupancy: 2-4 people

**Second floor**

size: 5800\*2250\*2450mm

Area of structure: 13m<sup>2</sup>

Occupancy: 2-4 people



# VL-DB03



## Ground floor

size: 11500\*2250\*2450mm

Area of structure: 134.5m<sup>2</sup>

Occupancy: 8-16people

The four hulls are spliced into two layers

**OPTIONAL  
SIZE**



# VL-DB04



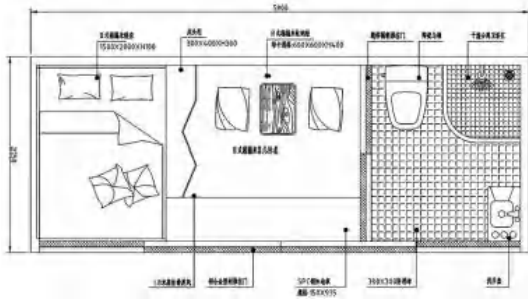
## OPTIONAL SIZE

**Second floor**  
size: 5800\*2500\*2450mm  
Area of structure: 13m<sup>2</sup>  
Occupancy: 2-4 people



**Ground floor**  
size: 5800\*2500\*2450mm  
Area of structure: 13m<sup>2</sup>  
Occupancy: 2-4 people





Size: 5800\*2250\*2450mm Area of structure: 13m<sup>2</sup>  
The number of people: 1-2



# VL-TB01



Size: 2250\*2250\*2250mm  
Area of structure: 5m<sup>2</sup>  
The number of people: 1-2

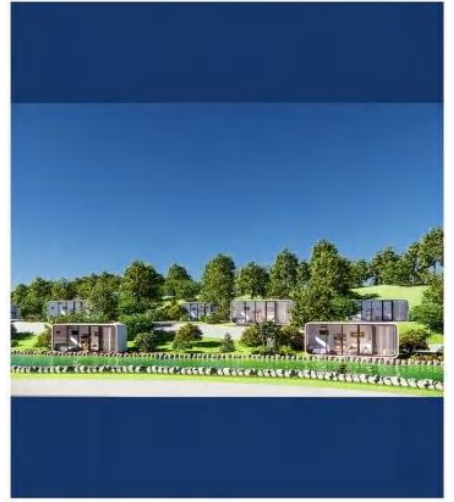
# VL-MB01

Size: 3500\*2250\*2450mm  
Area of structure: 7.9m<sup>2</sup>  
The number of people: 2-4

# VL-MB02



# PROJECT CASE



CONGHUA PROJECT





# PROJECT CASE



  
**ZHAOQING PROJECT**



  
**YUNNAN PROJECT**





# MODE OF TRANSPORT

## FOREIGN MODE OF TRANSPORT

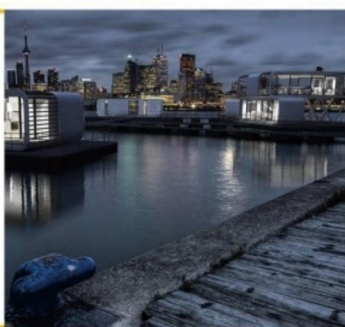
After the external packaging of the product is finished, it is transported in the container. Products from the factory to the site of the camp during the journey, will adopt strict safety protection measures to ensure safety and stability in transportation.



# PRODUCT APPLICATION SCENARIOS




Wid luxury camping accommodation  
Outdoor equipment exhibition  
Theme concert  
Design experience week




Brand press conference  
Market catering  
Aesthetics of life and lifestyle



Mobile shop  
Mobile house  
Mobile/sharing/ecology




Travel to study  
Education and medical care  
Health care and old-age care  
League building and expansion





## PLANT AND PRODUCTION



Volferda production base



Volferda production base



The total area of Volferda factory is about 30,000 square meters, more than 200 production personnel, the monthly delivery can reach 100 units. The core production team are all founders. Adhering to the production and management philosophy of providing customers with the best, highest quality, most ideal and most up-to-date products, each production and delivery process of products is strictly controlled, so as to achieve the best product quality and landing effect.

## HONORS AND CERTIFICATES



# How To Find Us

- ◆ Web

<https://www.volferda.com>

- ◆ Add

**1309, World Expo Financial Center,  
Chancheng District, Foshan City. Guangdong Province**

